



**Warsaw University  
of Technology**



**CZiTT**

Centre for Innovation  
and Technology Transfer Management  
of Warsaw University of Technology

ul. Rektorska 4, 00-614 Warszawa  
T +48 22 234 20 00, F +48 22 234 14 19  
[www.cziitt.pw.edu.pl](http://www.cziitt.pw.edu.pl), [cziitt@pw.edu.pl](mailto:cziitt@pw.edu.pl)

## WHAT IS CZiITT PW?

Centre for Innovation and Technology Transfer Management of Warsaw University of Technology (CZiITT PW) is the most important centre in the Mazovia region which supports technology transfer and innovations management, and conducts innovative research projects in these areas. These activities are possible using the potential of Warsaw University of Technology (WUT).

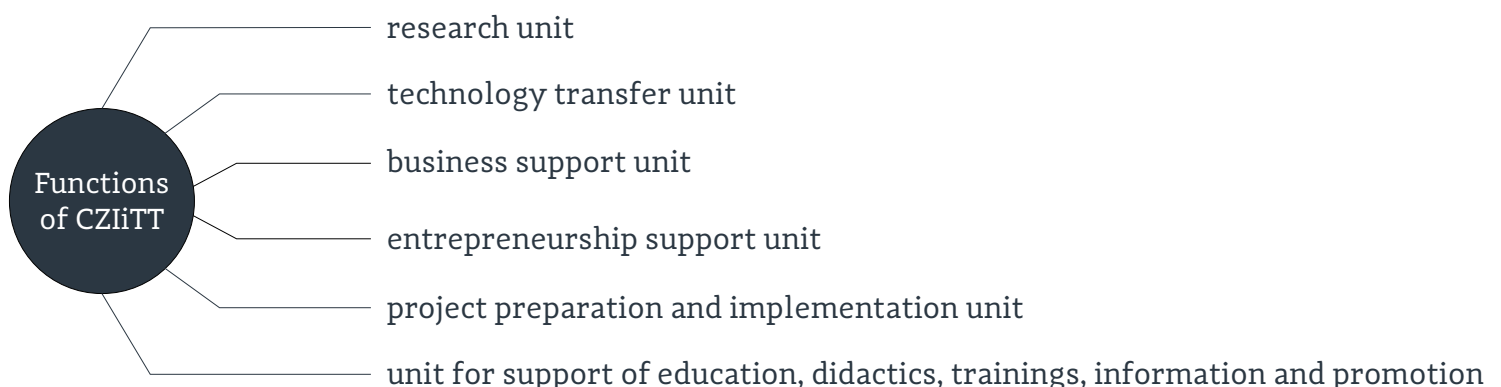
The Centre was established after the merge of the Office for Research and Strategic Projects of Warsaw University of Technology, which area of interests included strategic projects of Warsaw University of Technology implemented from Structural Funds, with the Office for the Project 'Warsaw University of Technology Development Programme'. It was the largest European Union programme in Poland aimed at improving the quality of education and adjusting educational offer of Warsaw University of Technology to the needs of labour market, which reinforced the University with new competencies.

The establishment of the Centre was co-financed from the European Regional Development Fund within the Operational Programme for the Mazovia Region 2007–2013, and from national funds.

## ADVANTAGES

The key advantage of the Centre is the facilitation of the access to the substantive, intellectual and infrastructural resources of Warsaw University of Technology. It allows for implementing projects which have an impact on solving technological problems faced by the largest business and administrative units in Poland.

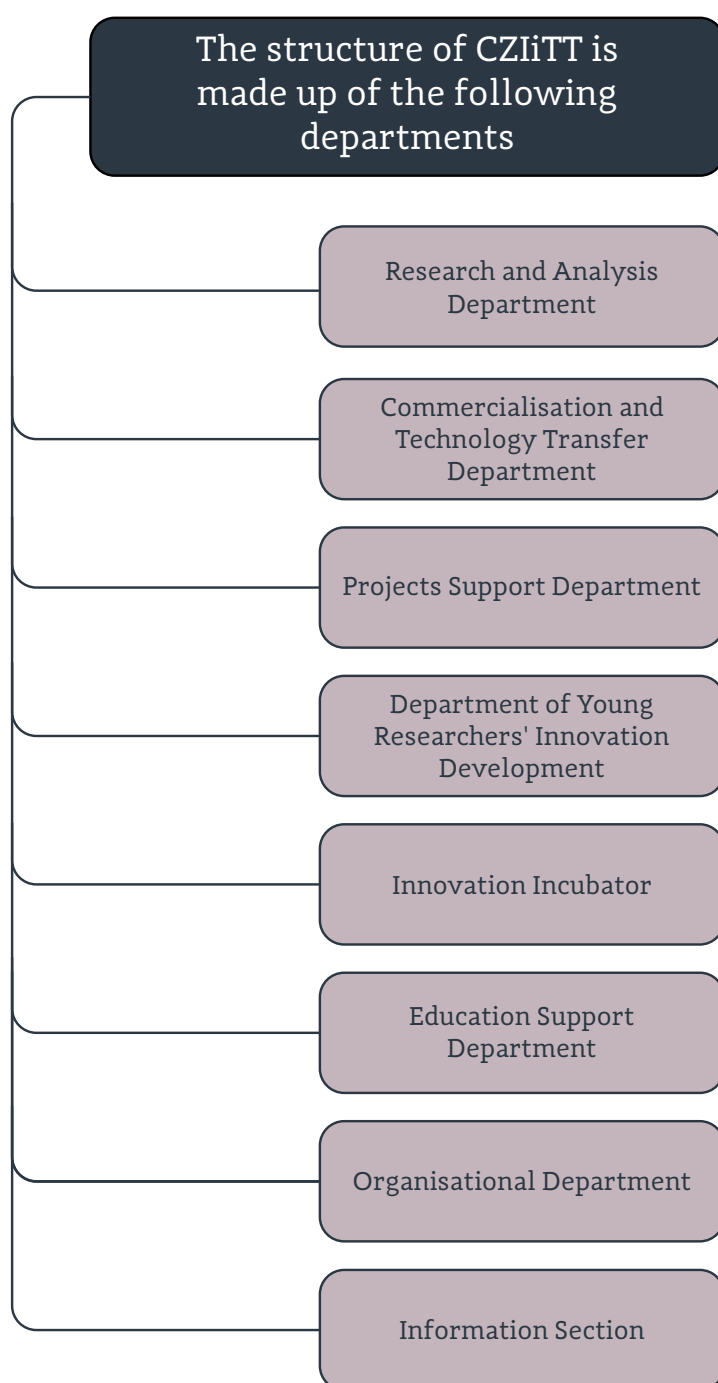
The Centre manages the modern infrastructure which includes, among others: laboratories for R&D works with the use of IT tools, creative rooms, modern conference and exhibition rooms, as well as social and networking space. We use our space in co-organising conferences, fairs, and seminars which are thematically connected with the activities of CZiITT PW.



## OUR PERSONNEL

The Centre's characteristics are defined mainly by the personnel – the experts in the areas of, for example, consolidating University's activities for effective commercialisation, transferring knowledge and technology, conducting research and analyses, obtaining and implementing projects, developing scientists, as well as in the area of incubation. Establishing co-operation with the Centre allows for taking advantage of knowledge and experience of leading experts from Warsaw University of Technology. That is why the offer of CZiITT PW is always perfectly matched to the individual needs of our partner.

The above-mentioned elements create a space for creative co-operation between scientific environment of Warsaw University of Technology, business and public administration.



# RESEARCH AND ANALYSIS DEPARTMENT

Research and Analysis Department specialises in initiating and implementing scientific and research projects of interdisciplinary nature, especially in the scope of:

- a) **supporting the innovative academic entrepreneurship** through research, e.g. the diagnosis of ways of understanding of entrepreneurial characteristics and competence, research on the need for products and services together with defining target groups, research on the competition market, and testing products and services;
- b) **technology and innovations transfer:** research supporting the search for existing social problems and technological solutions, research on needs and expectations of science and business, and creating innovations, creative problem-solving (Design Thinking) or the development of new products and services (Service Design);
- c) **processes of networking science and business:** Business Intelligence, User Experience (UX), market research;
- d) **creative processes and non-technological innovations:** conducting social and economic research with the use of workshops and creative games, and Design Thinking process;
- e) **labour market observation;**
- f) **quality management in higher education:** research on teaching quality within the socio-economic environment of the University, among others, consultations of concepts and educational programmes, as well as of the needs of employers hiring University's graduates;
- g) **foresight research, social consultations, evaluations and monitoring.**

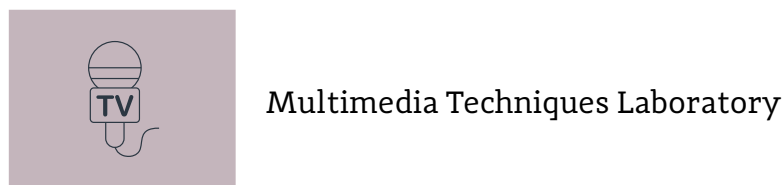
Research and Analysis Department is an interdisciplinary team of researchers, with wide experience in scientific and commercial research. Research/scientific personnel of CZiITT has knowledge and competence in the area of sociology, economy, psychology, information science, social policy and culture studies. Research and Analysis Department has been established on the basis of the Social Researches Support Department in the Office for Research and Strategic Projects of Warsaw University of Technology.

Research and Analysis Department conducts research with the use of the following research and analysis methods:

- a) **Social** research, including evaluation research:
  - surveys: traditional (*PAPI*), telephone interview (*CATI*), web interview (*CAWI*);
  - analysis of existing data sets (with qualitative and quantitative methods, including Data Mining);
  - interviews: individual (*IDI*), focus group interviews (*FGI*);
  - other quality research methods, among others, case study, the Delphi method, observations, expert panels, content analysis.
- b) **Economic** research:
  - cost analyses (break-even point, financial leverage, financial liquidity, profitability, indebtedness, performance efficiency, dynamic investment evaluation);

- forecasting methods: mathematical and statistical (deterministic, econometric), non-mathematical (surveys, expert opinions, analogies, the Delphi method, etc.)
- risk assessment methods (techniques: break-even point, statistical);
- methods of competitive advantage of companies (business plan, key success factors, benchmarking);
- strategic analysis methods (SWOT analysis, ADL matrix, growth-share matrix (BCG matrix), sector structural analysis, company strategic balance).

While implementing our projects, we use the **network of laboratories and research studios:**





Research and Analysis Department manages also:



a meeting room with space for 16 people, equipped with the professional devices for presenting materials and conducting video-conferences, and, additionally, with the dry wipe boards and a flipchart;



open space area for people cooperating with the Research and Analysis Department. This is a creative space for work where everyday duties never become boring (the researchers can work not only at the traditional workstations, but they can also sit on comfortable poufs and enjoy resources from a small library);



'relaxation area' next to the lecture classroom, where it is possible to relax on comfortable poufs and sofas (this area is also perfect for team meetings).

Research and Analysis Department uses **professional research software**, i.e. analytical software for data visualisation and social and economic research implementation: CADAS Software, IBM SPSS Statistics, STATISTICA, Tableau, or Atlas.ti.



**More information:**

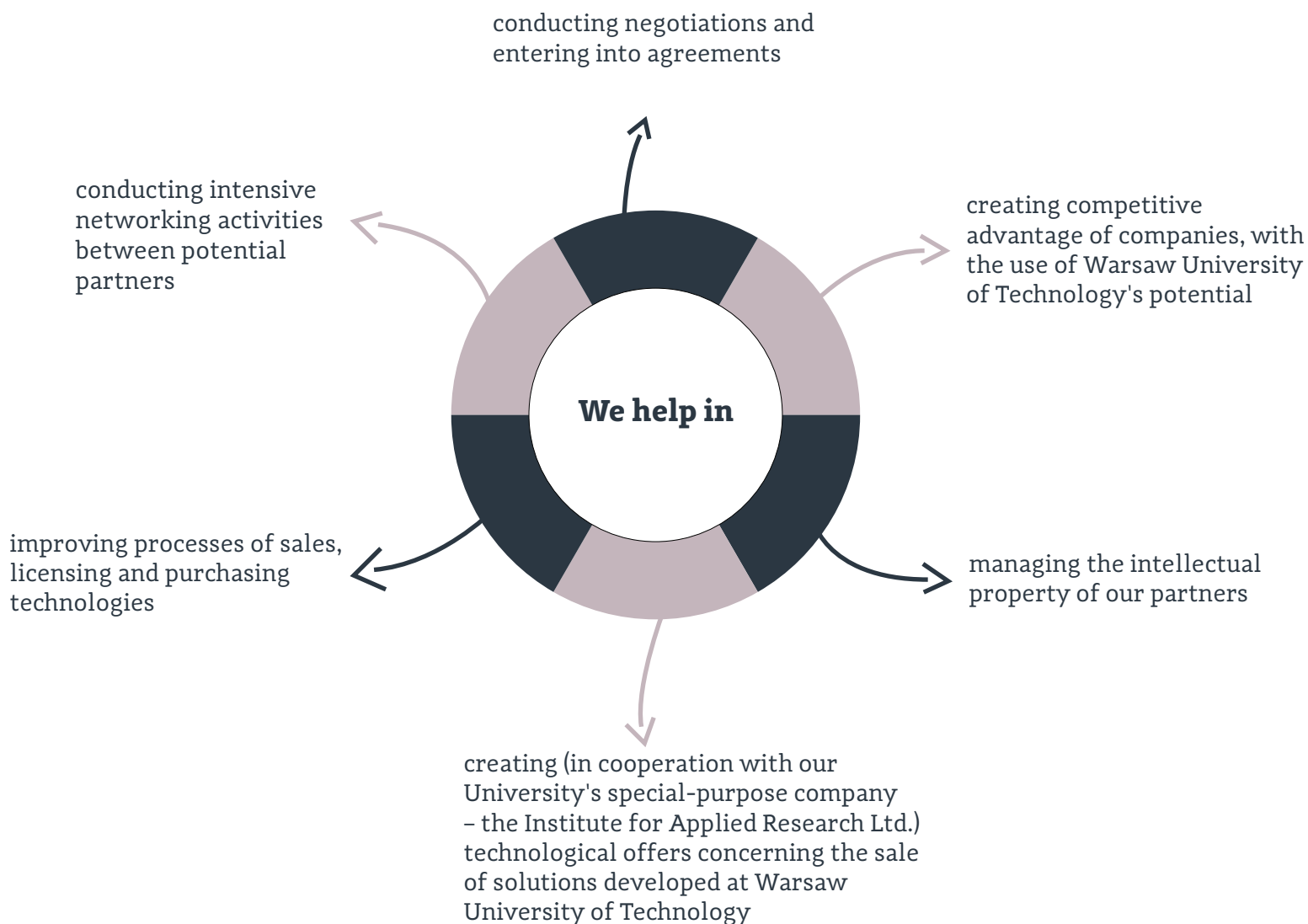
Katarzyna Modrzejewska  
T +48 22 234 59 78, +48 22 234 55 68  
badania.cziitt@pw.edu.pl

# COMMERCIALISATION AND TECHNOLOGY TRANSFER DEPARTMENT

## Purpose

Our task is to commercialise modern solutions developed at Warsaw University of Technology. In this way, we want to support the development of innovativeness in Warsaw, Mazovia, and even whole Poland. By introducing into the market new technologies, which are the reaction to the most frequent economic problems, we have an influence on quality of life of the society.

We make it possible for the newest technologies developed at Warsaw University of Technology to reach entrepreneurs who need them most. We connect our University's experts with the business partners interested in using new solutions.





## We enable



access to the scientific and research potential of scientific teams of Warsaw University of Technology;



intermediation between scientific teams and companies in the scope of ordered research;



identification and combining of scientific teams of Warsaw University of Technology with business partners interested in the cooperation within the framework of:

- commercial research services conducted at the order of companies,
- consortium in the projects financed by the European Funds,
- subcontracting/expert services in the projects financed by the European Funds.

### **More information:**

Katarzyna Podyma-Różak

T +48 22 234 71 59

katarzyna.rozak@pw.edu.pl

Krzysztof Raszplewicz

T +48 22 234 71 59

krzysztof.raszplewicz@pw.edu.pl



# PROJECTS SUPPORT DEPARTMENT

## Who do we support?

Projects Support Department supports organisational units of Warsaw University of Technology, its employees and students in the process of acquiring funds from Structural Funds of the European Union.



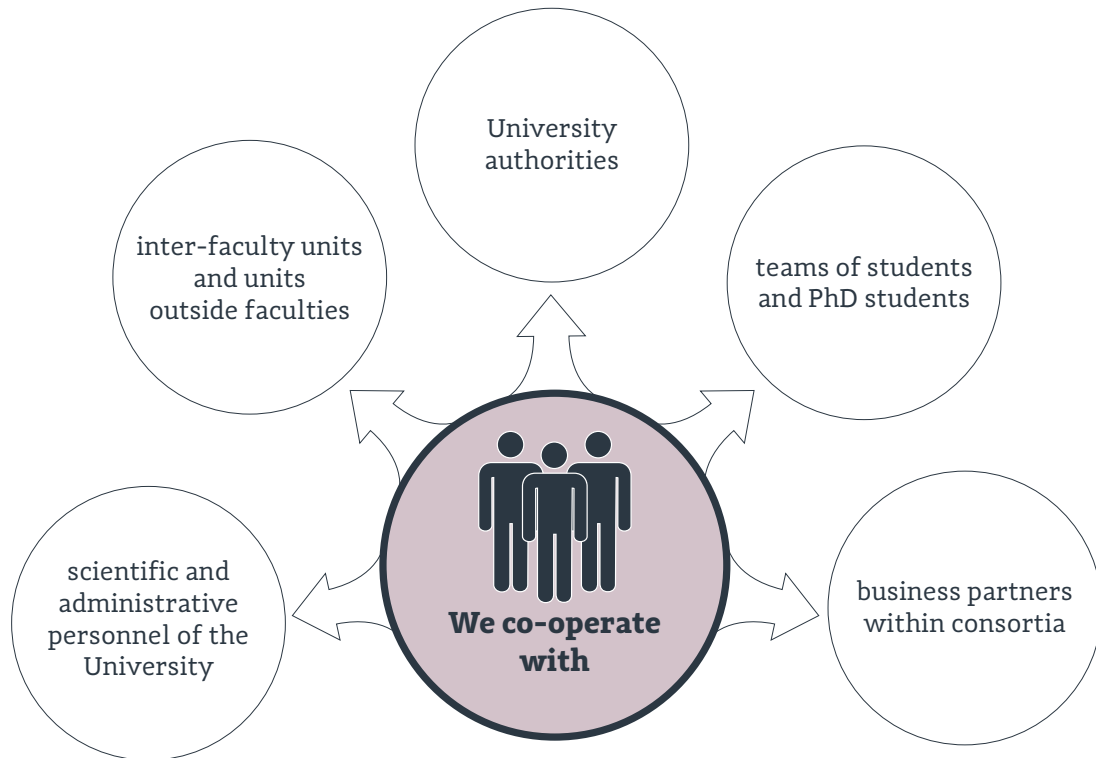
We keep projects' data bases and coordinate software connected with acquiring and implementing projects.

We cooperate with national and foreign partners in the scope of European Structural Funds.

Projects Support Department offers support in issues related with: winning projects from the Structural Funds of the European Union; monitoring and reporting; preparing and implementing the procedures of correct project implementation; verifying formal appendices to the projects submitted by the organisational units of the University; giving opinions on compliance of projects with the requirements of project and competition documentation; verifying partnership/consortium agreements within the context of European Structural Funds requirements; obtaining up-to-date data and knowledge about the Structural Funds of the European Union.

- Smart Growth Operational Programme
- Operational Programme Knowledge Education Development
- Operational Programme Digital Poland

- Operational Programme Infrastructure and Environment
- Operational Programme 'Mazovia'
- Interreg Baltic Sea Region Programme
- Interreg Europe Programme
- Interreg Central Europe Programme
- Norway Grants and EEA Grants



**More information:**

Magdalena Lipka-Chudzik

T +48 22 234 61 31

magdalena.lipka@pw.edu.pl



## DEPARTMENT OF YOUNG RESEARCHERS' INNOVATION DEVELOPMENT

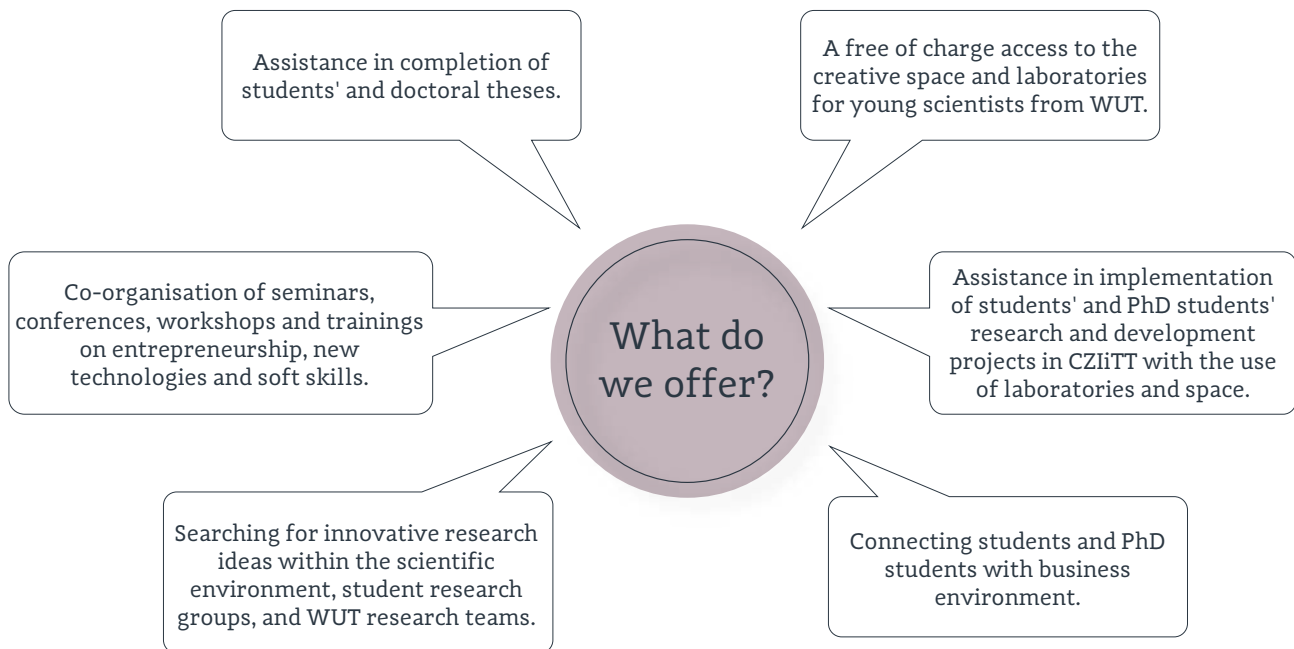
### Who are we?

Our team is composed of young, passionate and energetic students, PhD students and scientists from Warsaw University of Technology, cooperating with the Board of Student Research Groups of WUT, Rector's Team for Innovative Teaching Methods – INFOX PW, Students Self-government of WUT, and PhD Students' Board.

Department of Young Researchers' Innovation Development has created an offer for the most active and dynamic representatives of the world of young science of WUT, interested in development of innovations. We guarantee conditions that stimulate creativity, entrepreneurship and building of networking. In this way we enable all eager students to start the cooperation with business.

### Space for students, PhD students, and student research groups of WUT:

- **Open space** (room 3.12) – co-working space (with desks, chairs, sofas, poufs, overhead projectors, monitor and a kitchenette), open every day between 7 a.m. and 10 p.m. We encourage you to use open space regularly. You only have to register in the guests' book at the main secretariat of the building.
- **Seminar rooms, team work rooms and meeting rooms** (holding up to 25 people)
- **Space for creative design** (holding up to 50 people, suitable for workshops and trainings)



- **Laboratories:**

- **Laboratory of analytical and simulation works** (room 3.09) allows for conducting analyses and simulations with the use of integrated systems of engineering work support. 20 computer sets of increased efficiency have been prepared in the laboratory, together with software supporting engineering work, such as SolidWorks, CATIA v5, Inventor, CadSoft EAGLE, etc. The laboratory has been integrated by the tool for operating system images management.
- **Laboratory of prototyping techniques** (room 3.11, the so-called 'prototyping workshop') is designed for prototyping works with the use of supportive devices such as 3D printer, 3D scanner and other electronic devices which make it possible to independently create complex electronic systems. The following 3D FDM printers can be found there: 3Novatica Gate – 4 pieces, 3D System CubePro Trio – 1 piece, ARTEC EVA M hand-held scanner, set of elements for prototyping of electronic systems with the diagnostic equipment.
- **Studio of tool support for scientific and educational activities** connected with the multimedia techniques laboratory (room 3.14), which supplies computer environments to support programming teams' activities willing to test their applications. This studio is also designed to support the preparation of multimedia educational materials. There are 6 PC stations with the following software: Adobe eLearning Suite Edu, Rhinoceros 5.0 Edu, Agisoft PhotoScan Std, Camtasia Studio, CadSoft EAGLE, CATIA v5, Office 2016 Prof. There are also units for testing of 3D xBox One applications, together with Oculus Rift DK2, Intel Real Sense system, GoPro cameras, IP cameras, SMI Eye Tracer Glasses 2, DJI Phantom drones – 2 pieces, MindStorms LME EV3 modules, NI myRIO 1900.

**More information:**

PhD, Eng. Kinga Kurowska – Head of Department

Secretariat (room 3.06):

Aneta Gawryszewska, Joanna Rak

T +48 22 234 14 24

aneta.gawryszewska@pw.edu.pl

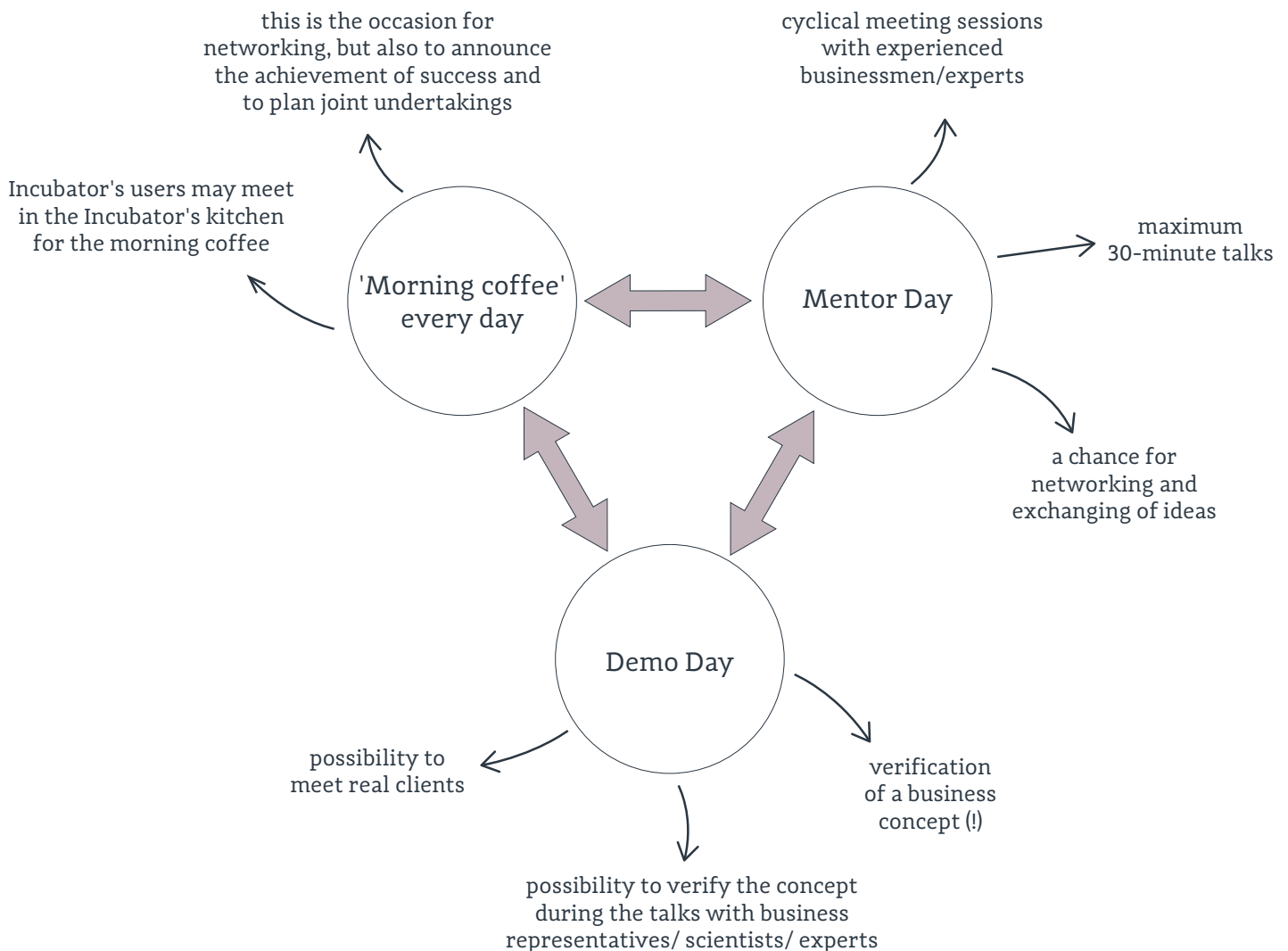
joanna.rak@pw.edu.pl

# INNOVATION INCUBATOR

## New quality in the market of incubators in Poland

Warsaw University of Technology invites you to the Innovation Incubator (**ININ**) aiming at activation of innovative entrepreneurship. Three programmes of support for entrepreneurs and start-ups have been established within the Centre for Innovation and Technology Transfer Management of WUT. While taking advantage of these programmes, the clients of **ININ** have the possibility to verify the market readiness of business projects and develop their own companies.

Projects for corporate and sector acceleration aimed at solving specific problems or commercialisation of a given technology are also going to be implemented in **ININ**.







### Available support programmes

	ININ 'START'	ININ 'MARKET'	ININ 'GLOBAL'
<b>Purpose</b>	concept verification	market début	market expansion
<b>Time of support</b>	maximum 2 months	maximum 6 months	maximum 24 months
<b>Offer</b>	<ul style="list-style-type: none"> <li>• support from ININ mentors and experts in building a business model</li> <li>• access to the co-working space</li> </ul>	<ul style="list-style-type: none"> <li>• a place in a dedicated co-working space</li> <li>• workshops</li> <li>• support from the network of ININ mentors and experts</li> </ul>	<ul style="list-style-type: none"> <li>• office in the Incubator</li> <li>• access to the laboratories, ININ mentors and experts, as well as R&amp;D projects of WUT</li> </ul>

#### More information:

Łukasz Sztern  
 T +48 22 234 14 30  
[lukasz.sztern@pw.edu.pl](mailto:lukasz.sztern@pw.edu.pl)

Michał Chmielecki  
 T +48 22 234 14 30  
[michal.chmielecki@pw.edu.pl](mailto:michal.chmielecki@pw.edu.pl)

# EDUCATION SUPPORT DEPARTMENT

## What do we do?

We help in development of education in the scope of academic entrepreneurship, innovativeness, technology transfer and commercialisation. We strive to stimulate creativity and entrepreneurship in the academic environment through the development of creative activities. We organise, among others, trainings, workshops, courses, and we take part in implementing educational projects. Our actions are not limited to passing on only the theory – we organise meetings and discussions promoting the cooperation between the academic environment and entrepreneurs-practitioners.



## By cooperating with the Education Support Department you gain:

- an experienced and recognisable partner to implement the educational project;
- support in developing an educational project;
- support in organising trainings/workshops/conferences;
- support in entering into co-operation between the scientific and business environment, for example support in organising traineeships or competitions addressed to students and scientists.

- ✓ Do you have an interesting idea for a project? Let's do it together.
- ✓ Do you want to share your knowledge with others? Send us a message, and we will help you to organise a meeting.
- ✓ We are experts in educational projects. 'Warsaw University of Technology Development Programme' implemented by us, was one of the largest educational projects co-financed by the European Funds (89 million zlotys). Over 30 thousand people took part in this programme.

## More information:

PhD, Eng. Rafał Ruzik  
T +48 22 234 59 93  
rafal.ruzik@pw.edu.pl

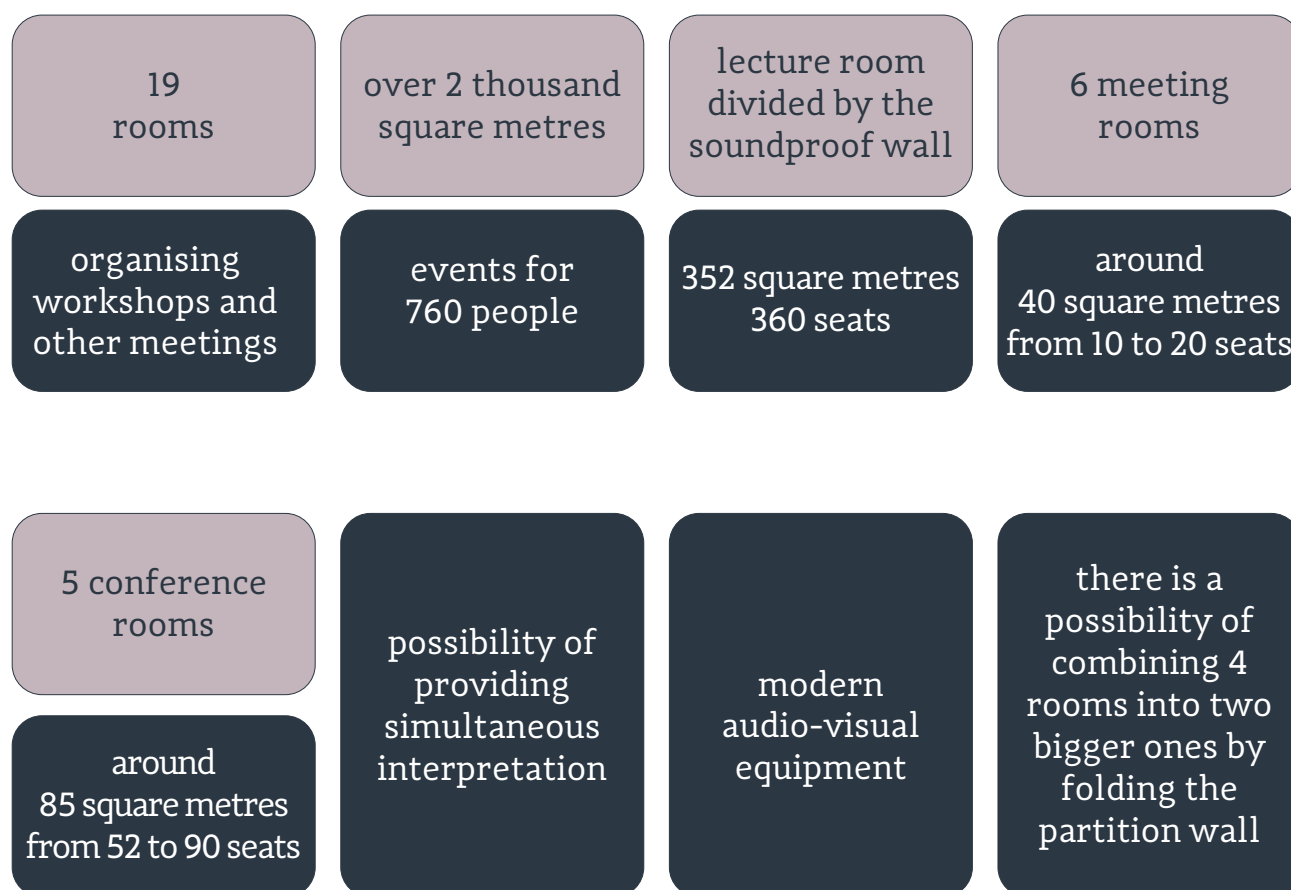
# ORGANISATIONAL DEPARTMENT

## What do we do?

Organisational Department supports all organisational units of CZiITT PW. Its activities cover the current functioning of the Centre and its continuous development.

Experts of the Department:

- manage the conference and exhibition infrastructure;
- co-organise meetings, conferences, workshops and other events carried out in the Centre;
- cooperate with other departments in creating and implementing new services for the Centre's employees, academic environment and business partners;
- support partners in the scope of granting State aid;
- take part in acquiring partners for implementation of joint initiatives.



## More information:

Aneta Nowakowska

T +48 22 234 71 54

[aneta.nowakowska@pw.edu.pl](mailto:aneta.nowakowska@pw.edu.pl)





Photos: WOW School, Polygon, Office for Promotion and Information (WUT)  
UNEP/GRID - Warsaw, TVPW